

Langham Products

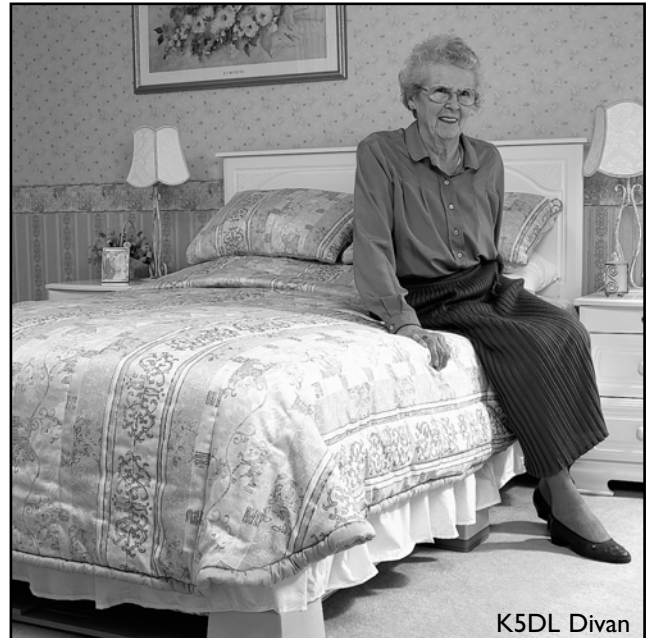
• Bed Raising Units



K300 Grip-On Raiser



NLPI29 Adjustable Raiser



K5DL Divan

K300 Grip-On raiser

The Grip-On raisers are a very versatile product, being used to raise chairs, beds and tables. The "doughnut" top unit grips firmly on to legs or castors providing a solid stable support.

The large K300 Grip-On raiser can accommodate the largest castors, gripping them very tightly and securely. The K100 Grip-On raisers work equally well with the small one inch size castors found on most divan beds.

Product Details

K100 Fits legs up to 1.5" diameter

K200 Fits legs up to 2" diameter

K300 Fits legs up to 2.5" diameter

Adjustable raise of 1 1/4, 2 1/4 or 3 1/4 inches.

Weight limit 500Kg (70 stone)

NLPI29 Adjustable Raiser

The adjustable bed raiser is specifically designed for beds with legs. The base has been elongated to improve the size of its foot print and give much greater stability. Each unit is linked across the width of the bed to provide greater strength. The raise can be altered through the use of insert blocks under the bed leg giving three different height adjustments. Bed legs up to 2 1/2" square can be fitted into the raiser further increasing the versatility of this product. Two versions available.

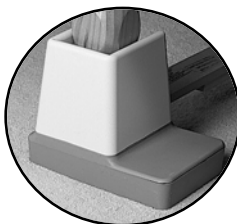
Product Details

NLPI29 Bed raiser maximum 57 1/2" width

NLPI29 Short with 35" maximum width.

Height adjustment of 2 1/2, 3 1/2 or 4 1/2 inches

Weight limit 500Kg (70 stone)



K5DL Divan

The divan bed raisers come in two different heights with either a 5" or a 3" raise. They are available in single or double sizes and for divans with extra sets of castors there is also the central support. The sturdy base unit fits snug against the bed base to provide maximum support and safety without creating a trip hazard. A well in the centre of the corner unit allows the castors to remain on the bed; this provides additional safety from the units being accidentally knocked from under the bed.

Product Details

K5S, K5D Single & Double Divan Raisers 5" raise

K5SL, K5DL Single & Double Raisers 3" raise

Max Width K5S & SL - 45", K5D & DL - 57 1/2"

Weight limit 500Kg (70 stone)

Langham Products

• Bed Raising Units

Grip-On Bed/Chair Raiser K100, K200 & K300



- 1 Grip-On Bed/Chair Raisers are supplied fully assembled.
Minimum & maximum leg sizes accepted -
K100 - 19 to 38 mm
K200 - 32 to 50 mm
K300 - 43 to 65 mm
- 2 Place all Grip-On under legs of bed or chair to be raised. If castors are to remain they must be securely gripped and must rest on the base of the Grip-On.
- 3 Press down on bed or chair being raised to lock Grip-On in place.
- 4 If required set height adjustment by removing one or both base sections from each raiser. (height must be equal for all legs) Before use, test for stability.
- 5 As with all devices designed to assist the elderly or disabled, care should be taken to avoid sudden or undue movement, when using this equipment.
- 6 Grip-On Raisers are designed for use in static mode only
Furniture may be heavy. Please take care when fitting the raiser unit.
Maximum operating load

500-kg (70 stone) per set of four raisers (including weight of chair/bed)



Adjustable Bed Raiser Unit NLP129, NLP129 Short



As with all devices designed to assist the elderly or disabled, care should be taken to avoid sudden or undue movement, when using this equipment.

1. Position units on the floor parallel to the front and rear of bed.
2. Loosen wing nuts and adjust to size so that bed castors will drop into raiser sockets. Plastic blocks for insertion into raisers are supplied with each unit. Two blocks are supplied (to raise from 24-mm to 48-mm) therefore it is important to check that the extra height being added is the same for all four raisers.
3. Lift bed and place legs into sockets. Ensure the rails run side to side under the bed, so as not to present a trip hazard to the user.
4. Push raiser sockets tight up against the corners of the legs.
5. Tighten the wing nuts.
6. Ensure bed is stable on the raisers before use.
7. This product is designed for use in a loaded static mode only.
Furniture may be heavy. Please take care when fitting the raiser unit.

Maximum operating weight

500-kg (70 stone) Including weight of bed



Divan Bed Raiser Unit K5S, K5S C, K5S L, K5S CL, K5D, K5D C, K5D L, K5D CL



Divan Bed Raiser Units are designed for use in static mode only. As with all devices designed to assist the elderly or disabled, care should be taken to avoid sudden or undue movement, when using this equipment.

- 1 Place one pair of bed raisers parallel at foot of bed.
- 2 Loosen wing nuts and adjust to size so that the bed corners will drop onto raisers.
- 3 Lift bed and place bed corners on to raisers. It is not necessary to remove any existing castors fitted to the bed.
- 4 Push raiser sockets tight up against the corners of the bed. The raiser socket should be clamped tight up against the corners of the bed. If using a Central Support also ensure it is pushed up tight to sides of bed. Tighten wing nuts.
- 5 Repeat for the opposite pair at the head of the bed.
- 6 Ensure bed is stable on the raisers before use.
- 7 The product is designed for use in a static mode only.
Furniture may be heavy. Please take care when fitting the raiser unit.

Maximum operating load

500-kg (70 stone) including weight of bed.

